



C35

EURO4

DFSK

The spacious and solid solution for your business



3-Year Warranty
Or 120,000 km
whichever comes first



DK 1.5
DVVT

Maximum Power: 100ps @ 6,000 rpm
Maximum Torque: 136 N.m @ 4,000 rpm



All Pictures shown are for illustration purpose only.

DONGFENG

TECHNICAL SPECIFICATION

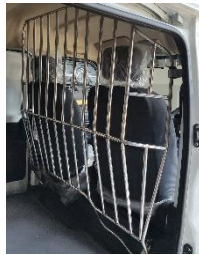
Model	Model Code DXK5026XXYF	
Parameter	Brand	DFSK
	Body	Panel Van Double Sliding Doors
Weight & Dimension	Seating Capacity	2 seats
	GVW (Gross Vehicle Weight)	2100kg
	Grade Ability	30%
	Cab Width	1680mm
	Wheel Base	3050mm
	Carriage Inline Dimension (LxWxH)	2250 mmx1480 mmx1280 mm
	Overall Dimension (LxWxH)	4500 mmx1680 mmx2000 mm
	Curb Weight	1290kg
	Maximum Speed	110km/H
	Max. Turning Radius	10.5 m
	Ground Clearance	190mm
	Departure Angle	11°
	Approach Angle	36°
	Pass Angle	21°
Engine	Engine Model	DK 1.5 DVVT (Gasoline)
	Rated Power	74 kW @ 6,000 rpm
	Maximum Torque	136N·M @ 4,000 rpm
	Emission Standards	Euro IV
	Fuel Tank Capacity	55L
	Transmission	5-Speed Manual
Axle	Front Axle Load	940kg
	Rear Axle Load	1205kg

Chassis	Braking System	Front Disc, Rear Drum
	Braking Mode	Hydraulic
External Configuration	ABS (Antilock Braking System)	√
	Driving Type	Rear Wheel Drive
	Front Suspension	MacPherson independent
	Rear Suspension	5-Leaf Spring, Non-independent Suspension, With Stabilizer Bar
	Steering	Electric Power Steering
	Clutch Form	Mechanical
	Tyre	185/80R14
	Rim	Silver steel wheels,
	Wheel covers	Dongfeng logo
	Wheel nuts	Galvanized nuts
Interior Configuration	Headlamp	Halogen
	Front Door Window	Electric Power Window
	Retroreflector	Independent
	Foglamp	√
	Rear Lamp	√
	High Mount Stop Lamp	√
	Instrument Panel	Modern Meter Cluster
	Audio System	AM/FM Radio
	Aircon	Manual Single Zone
	Seat Belts	3-point
	Horn	Tone Horn



PVC FLOOR

Durable and convenient for loading and unloading goods



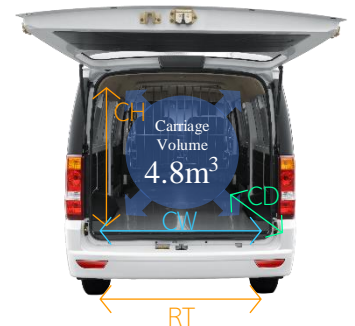
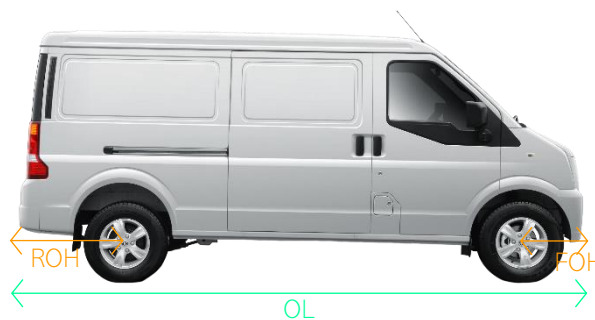
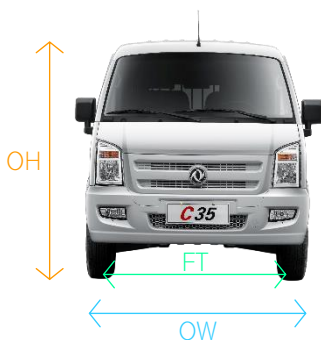
Stainless Steel Fence

The fence has a curved shape that allows for adequate cargo space and maximum driving space while keeping the cargo safe.



Ergonomic Design Layout

Sedan Instrument Panel: substantial, concise and elegant.
Accessible Operation: enable good hand-eye coordination.



Chassis Dimension (mm)

Overall Length (OL)	4,500	Wheelbase (WB)	3,050	Front Tread (FT)	1,435
Overall Width (OW)	1,680	Front Over Hang (FOH)	570	Rear Tread (RT)	1,435
Overall Height (OH)	2,000	Rear Over Hang (ROH)	880		

Carriage Dimension (mm)

Carriage Width (CW)	1,480
Carriage Height (CH)	1,280
Carriage Deep (CD)	2,550

Disclaimer: The Manufacturer reserves the right to make changes to technical parameters & designs or to discontinue models without prior notice.

DONGFENG COMMERCIAL VEHICLE (MALAYSIA) SND BHD

Lot 526, Persiaran Subang Permai, Sungai Penaga Industrial Park,
USJ 1, 47600 Subang Jaya, Selangor Darul Ehsan.

Tel: 03-8021 9068 Fax: 03-8021 9069

Website: <http://dongfeng.my/>

Authorised Dealership



SUNWAY
TRADING &
MANUFACTURING

© Version 09/2022